

Library Hours

MON.	9:00 AM - 8:00 PM
TUES.	9:00 AM - 8:00 PM
WED.	9:00 AM - 8:00 PM
THURS.	9:00 AM - 8:00 PM
FRI.	9:00 AM - 6:00 PM
SAT.	9:00 AM - 5:00 PM
SUN.	1:00 PM - 4:00 PM

Please check the library website www.guilfordfreelibrary.org under "Hours and Directions" for changes to our hours on holidays and updates due to weather.

Looking to stay local?

Our Children's Department offers passes to many Connecticut museums. For more information, please contact the Children's Department. Borrowing rules vary.



Sponsored by the
Friends of the
Guilford Free Library

Contact Us

Guilford Free Library
67 Park Street
Guilford, CT
(203)453-8282

Borrowing Guidelines

Museum passes may be checked out by Guilford residents, 18 and older, with a Guilford library card in good standing.

Non-residents may request a pass on the day of pickup. Online reservations are not available to non-residents.

Availability

- Passes can be reserved for up to **2 weeks** in advance in person or by calling the Reference Department at (203)453-8282.

Checkout/Return

- ◆ Patrons can pick up/check out passes at the Reference Desk.
- ◆ Passes may be borrowed for **3 days** and cannot be renewed.
- ◆ Passes are to be returned to the library by the evening of the 3rd day (in book drop) or in person by 9am on the 4th day at the circulation or reference desks.

Fines

- ◆ Overdue fine is **\$5 a day**.
- ◆ Patrons are required to pay the replacement cost if the passes are lost, stolen or damaged (see borrower's agreement).

Museum Locations



	The Frick Collection
	Guggenheim
	Museum of the City of New York
	New York Historical Society
	Intrepid Sea, Air & Space Museum

ADULT MUSEUM PASSES at the Guilford Free Library



Planning a visit to NYC? Take advantage of the Library's museum passes and get in for free!



Intrepid Sea, Air & Space Museum (top left), Guggenheim (top right), The Frick Collection

Museum Passes

Available Passes

The Frick Collection

1 East 70th Street
(between Madison and Fifth Avenues)
New York, NY 10021
(212)288-0700

www.frick.org/visit



- ◆ **4 passes** total - each good for **1 adult** general admission (children under 10 years old are not permitted in the museum).

*Please check museum website for hours, closings, and events.

Guggenheim

1071 5th Avenue
(between 88th & 89th ST)

New York, NY 10128
(212)423-3500

www.guggenheim.org



- ◆ **2 passes** total - each pass good for general admission for **2 adults**.

*Please check museum website for hours, closings, and events.

Intrepid Sea, Air & Space Museum Complex



Pier 86
W 46th St and 12th Ave
New York, NY 10036-4103
(877)957-7447

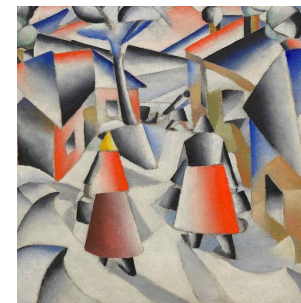
www.intrepidmuseum.org

- ◆ **1 pass** good for general admission for **2 adults & 2 children**.

◆ Must present Guilford Free Library card in addition to museum pass at time of visit.

- ◆ Library Pass includes admission to the Space Shuttle Pavilion.

*Please check museum website for hours, closings, and events.



Morning in the Village after Snowstorm, 1912
by Kazimir Malevich - Guggenheim Collection

Museum of the City of New York

1220 Fifth Ave at 103rd St., New York, NY 10029
(212)534-1672

www.mcny.org



- ◆ **2 passes** total - each pass good for general admission for **1 adult & up to 2 children**.

◆ 20% discount in the museum Shop and Chalsty's Café

*Please check museum website for hours, closings, and events.

New York Historical Society & Museum



170 Central Park West
at Richard Gilder Way (77th Street)
York, NY 10024
(212)873-3400

www.nyhistory.org

- ◆ Passes are good for general admission for up to **2 adults & 4 children under 18 years old**.

*Please check museum website for hours, closings, and events.